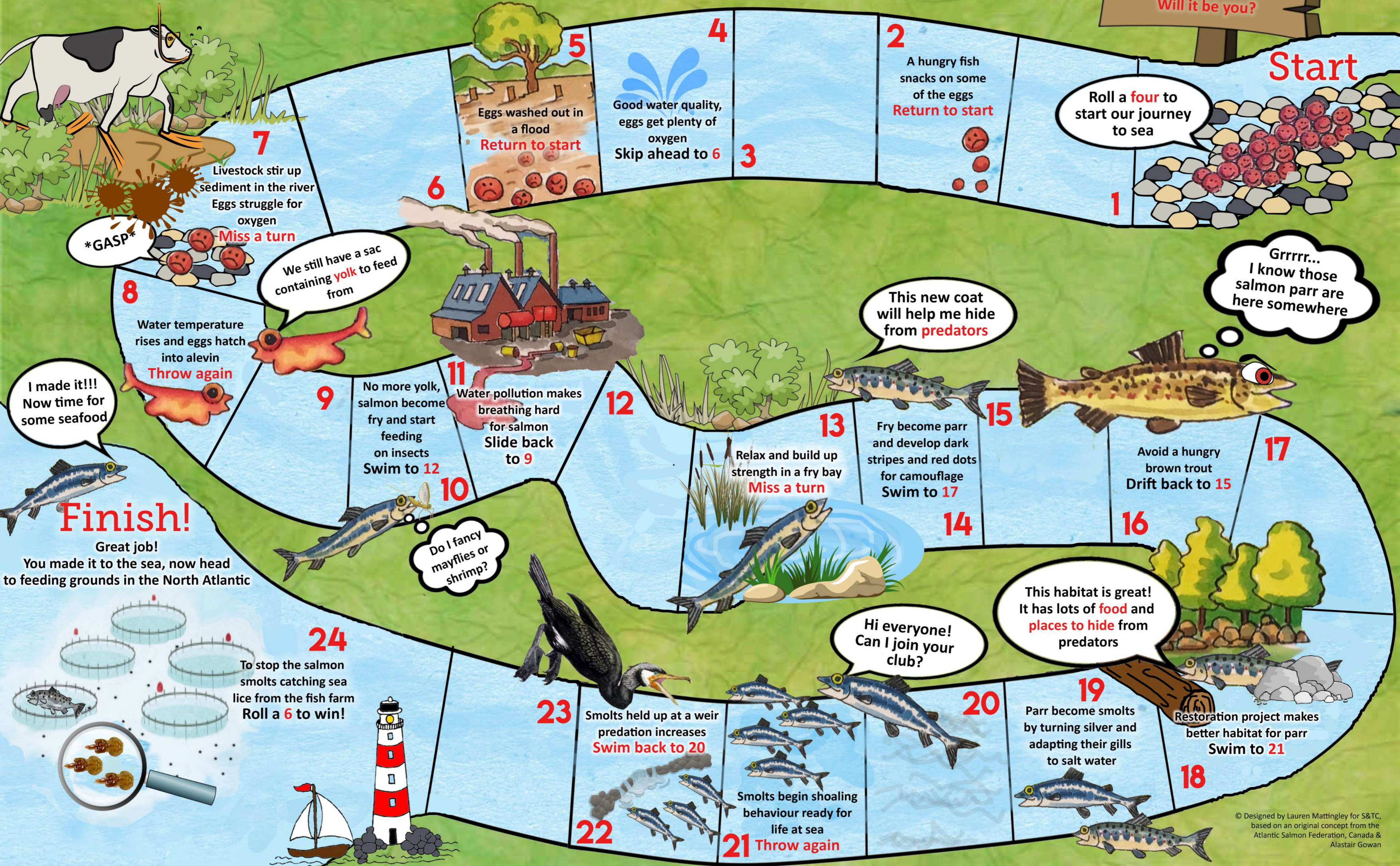




Fish on a Mission Part 1: THE ATLANTIC SALMON'S SPRINT TO THE SEA

Salmon lay lots of eggs, but out of 150 eggs, only one smolt will reach the sea
Will it be you?



Start

Roll a **four** to start our journey to sea

1

2
A hungry fish snacks on some of the eggs
Return to start

3

4
Good water quality, eggs get plenty of oxygen
Skip ahead to **6**

5
Eggs washed out in a flood
Return to start

6

7
Livestock stir up sediment in the river
Eggs struggle for oxygen
Miss a turn

GASP

We still have a sac containing **yolk** to feed from

8

Water temperature rises and eggs hatch into alevin
Throw again

I made it!!!
Now time for some seafood

Finish!

Great job!
You made it to the sea, now head to feeding grounds in the North Atlantic

9
No more yolk, salmon become fry and start feeding on insects
Swim to **12**

11
Water pollution makes breathing hard for salmon
Slide back to **9**

10

Do I fancy mayflies or shrimp?

12

Relax and build up strength in a fry bay
Miss a turn

13

This new coat will help me hide from **predators**

Fry become parr and develop dark stripes and red dots for camouflage
Swim to **17**

14

15



Avoid a hungry brown trout
Drift back to **15**

17

Grrrrr...
I know those salmon parr are here somewhere

16

This habitat is great!
It has lots of **food** and **places to hide** from predators



Restoration project makes better habitat for parr
Swim to **21**

18

Hi everyone!
Can I join your club?

20

Smolts begin shoaling behaviour ready for life at sea

21 **Throw again**

23

Smolts held up at a weir predation increases
Swim back to 20

22

24
To stop the salmon smolts catching sea lice from the fish farm
Roll a **6** to win!

